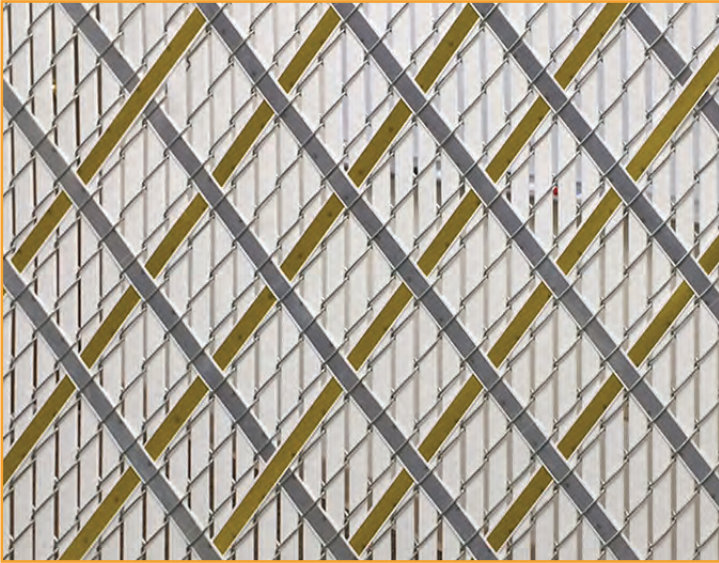


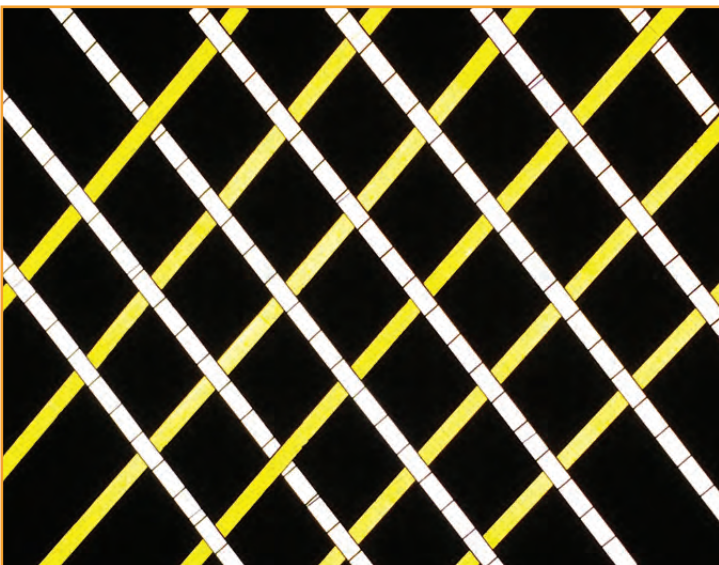
Reflective Fence Inserts



Reflective Fence Inserts in Daytime



Reflective Fence Inserts at Night



Reflective Colors*



Gold



Silver



Now available in Red

Reflective Fence Inserts are designed for gates and sections of chain link fence where visibility is critical, especially at night.

These Reflective Fence Inserts are well suited for airports, hospitals, schools, commercial facility entranceways, temporary construction sites, residential driveways, or keeping vehicular traffic away from any fenced-in area. One use is to create directional cues for drivers by installing the Reflective Inserts diagonally in the chain link fence panel or gate in the shape of arrows.

Pexco is the largest manufacturer of chain link fence enhancement products, which are marketed under the PDS® brand name. With over 40 years of experience extruding these innovative, proprietary products, you are assured of the highest standards in quality – from the raw materials used in manufacturing to the finished product in your fence.



FENCE PRODUCTS

PDS® is a registered trademark of Pexco.

* Exact representation of slat colors in printing is difficult. Please refer to actual color samples for final matching.

Reflective Fence Inserts Product Specifications



REFLECTIVE FENCE INSERT INSTALLATION

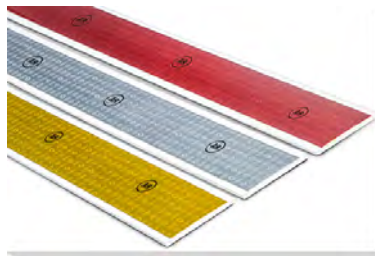
GALVANIZED	Diagonal	Vertical	Horizontal	COLORED	Diagonal	Vertical	Horizontal
2-3/8"	X	X	X	2" x 9ga finish	X	X	X
2-1/4"	X	X	X	2" x 8ga finish	X	X	
2" x 9 or 11ga	X	X	X	2" x 6ga finish	X	X	
2" x 6ga	X	X		1-3/4"	X		

Product Size

- 1.25" wide x .080" thick x 48" long

Product Colors

- Reflective Gold
- Reflective Silver
- Reflective Red

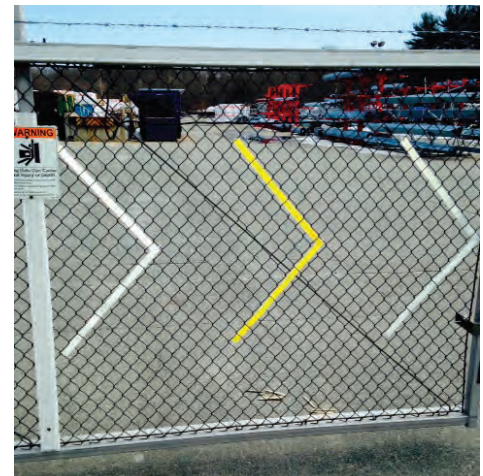


Product Packaging:

- Packaged in convenient poly-wrapped sets of 10 inserts per color (10-packs)
- Four 10-packs per box (total 40 pieces) per color (Gold, Silver or Red)
- Box size is 2" high x 5" wide x 50" long
- Box gross weight is 11 lbs

Product Description / Application:

- White Rigid PVC strips laminated with highly reflective, abrasion resistant, weatherproof tape
- Very versatile product for chain link fence - can be installed either diagonally, horizontally or vertically
- Conveniently produced in 4ft lengths to work in any height 2" x 9 or 11 gauge chain link fence
- To install, drill a small hole on one end. Then easily thread the Reflective Insert through the chain link fabric. Slip a zip-tie or hog ring through the small drilled hole and fasten to the chain link fabric.
- Can also be installed in front of standard PDS® Fence Slat for background and maximum reflection
- Outstanding reflection of headlights providing illumination of gates and fence for many applications



These Inserts are so highly reflective, they can be used sparingly and configured as geometric shapes or arrows to gain the desired effect, as in the above chain link gate application.



Pexco Tacoma
Tacoma, WA
800.822.SLAT (7528)

Pexco Athol
Athol, MA
800.755.SLAT (7528)

www.pdsfence.com
www.pexco.com/fence

Contact your local fence professional for more information about our complete line of enhancement products.

